



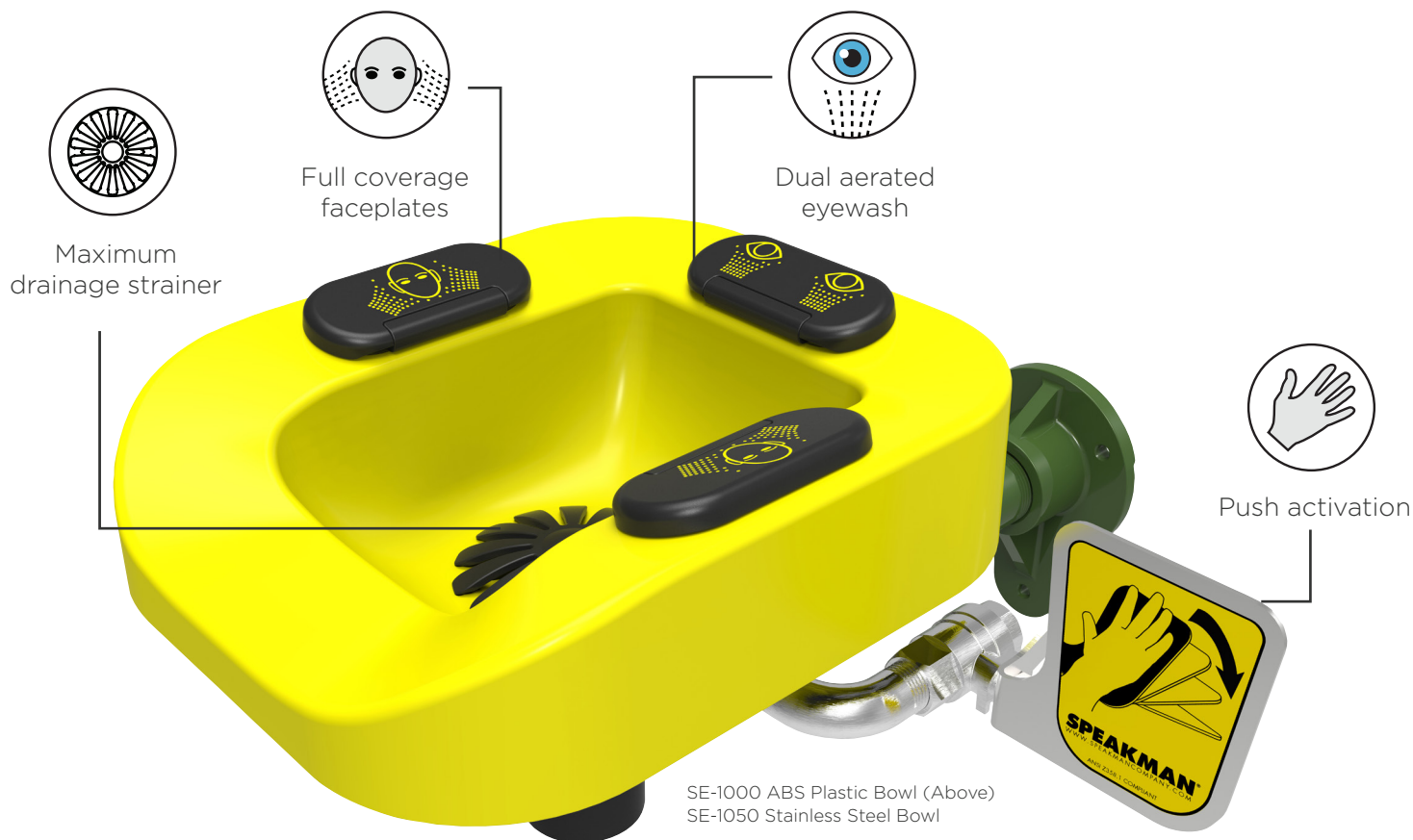
OPTIMUS[®]
BY **SPEAKMAN[®]**

IT'S MORE THAN MEETS THE EYE

The Optimus Emergency Station is our most revolutionary creation to date. Featuring a dual aerated eyewash and a full-coverage facewash, the Optimus is the first unit to seamlessly integrate both features into one cohesive design.

But the Optimus does so much more. The Optimus can be wall mounted, pedestal mounted and even combined with an emergency shower station. Optimus is 100% ANSI/ISEA Z358.1 Certified and features configurable components to meet ADA height specifications, making it the ideal solution for a wide range of customer applications.

PRODUCT MAP



ANSI Z358.1 certified



Pedestal mount



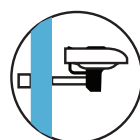
Wall mount ADA compliant



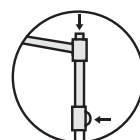
DuraJade powder-coated finish



Combine with emergency shower



ADA compliant



Top & side supply inlet

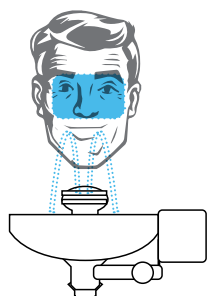


Elevated drain

OPTIMUS BENEFITS

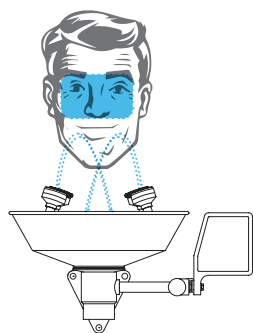
- Aerated sprays deliver comfortable, soothing relief for 15 continuous minutes.
- Optional transparent cover (OCV) protects the unit from accumulating dirt and debris.
- Intuitive design allows users to quickly immerse their entire face in the event of an emergency.
- Integral in-line strainer prevents debris from clogging spray heads.
- Eliminates the need to choose between an eyewash or facewash.
- Meets ADA accessibility requirements when mounted at appropriate height.
- Meets air gap specifications to prevent back flow.
- Available in a plastic bowl, stainless steel bowl or entire stainless steel construction.

COMPETITIVE COMPARISON



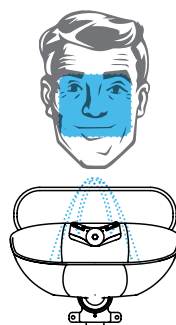
Haws Axion

- Eye sprays are challenging to locate
- If spray head twists - eyewash becomes useless
- Uncomfortable sprays



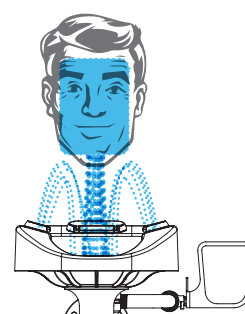
Guardian WideArea

- Only WideArea unit provides full coverage
- No distinct sprays for eyes
- Non-intuitive design



Bradley Halo

- Intuitive design
- Eye sprays are challenging to locate
- Uncomfortable sprays



Speakman Optimus

- Intuitive design
- Full spray coverage
- Clear face placement
- Aerated eye sprays for comfort

WE'VE GOT YOU COVERED

If your customer needs the Optimus bowl covered, simply call Speakman Customer Service at 1-844-SPEAKMAN. We can help you order an Optimus Dust Cover (OCV) that will ship directly to the customer. The cover easily retrofits in the field and protects the unit from dirt and debris.





SE-1000



SE-1050



SE-1055



SE-1100



SE-1150



SE-1155



SE-1200

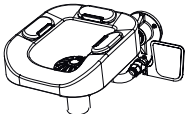
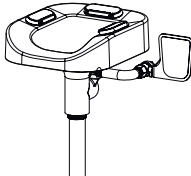
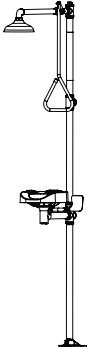


SE-1250



SE-1255

OPTIMUS SAFETY BOWL SERIES

OPTIMUS	DESCRIPTION	BOWL MATERIAL	HAWS	BRADLEY	GUARDIAN	ENCON
	SE-1000 Wall mounted Optimus Eye & Facewash Combination Station	Plastic	7260B-7270B	S19-220, S19-224EW, S19-220FW, S19224FW, S19-220ABF, S19224PT	G1750P, G1814P	01030401, 01035501
	SE-1050 Wall mounted Optimus Eye & Facewash Combination Station	Stainless Steel	7360B-7460B, 7360BTWC	S19-220B, S19224B, S19-220T, S19224T, S19-220BBF, S19224BPT	G1750, G1724, G1814, GBF1724	01045001, 01045501
	SE-1055 Wall mounted Optimus Eye & Facewash Combination Station	Stainless Steel	-	-	-	-
	SE-1100 Pedestal mounted Optimus Eye & Facewash Combination Station	Plastic	7261-7271	S19-210, S19214EW, S19-210FW, S19214FW	G1825P	01030302, 01035402
	SE-1150 Pedestal mounted Optimus Eye & Facewash Combination Station	Stainless Steel	7361-7461	S19-210B, S19214B, S19-210Y, S19214Y	G1760, G1704, G1825	01045002
	SE-1155 Pedestal mounted Optimus Eye & Facewash Combination Station	Stainless Steel	-	-	-	-
	SE-1200 Optimus Eye & Facewash Combination with emergency shower station	Plastic	8320-8325	S19-310, S19314EW, S19-310FW, S19314FW, S19-310BFPB, S19314BFPB	G1950P, G1902P	01050207, 01050216, 01050251, 01050260, 01050274, 01050275
	SE-1250 Optimus Eye & Facewash Combination with emergency shower station	Stainless Steel	8300-8309, 8309WC	S19-310SB, S19314SB, S19-310SBFW, S19314SBFW, S19-310BF, S19314BF	G1909, G1950, G1902, GBF1909	01050230, 01050234, 01050272, 01050273
	SE-1255 Optimus Eye & Facewash Combination with emergency shower station	Stainless Steel	-	S19-310BFSS, S19314BFSS	G1994, G1996, G1991, GBF1994	01050219, 01050223